

# Panorama Seafront Homes II

## Coastal properties



### House 25

#### Property Information

Type: First floor Apartment  
House Size (m<sup>2</sup>): 69,22  
Bedrooms: 2  
Bathrooms: 1  
Land Size (m<sup>2</sup>):  
House Price(\*): **SOLD**

\* Downpayment 2% to reserve the property

#### Description

An exclusive sea facing 2 bedroomed home of 69, 22 m<sup>2</sup>. In this unique first floor home you'll find an open plan kitchen, spacious living/dining room with a modern fire place. A corridor leads into a separate area which comprises of a bathroom and two spacious bedrooms, each with their own veranda offering tranquil sea and pool views. The living room area opens up onto a beautiful veranda with panoramic sea and pool views.

#### Features

Sea view  
Mountain-Pool view

Balconies- Veranda  
Underfloor Heating  
Fireplace

Satellite TV  
Internet connections  
Built-in provision for A/C

#### Not included

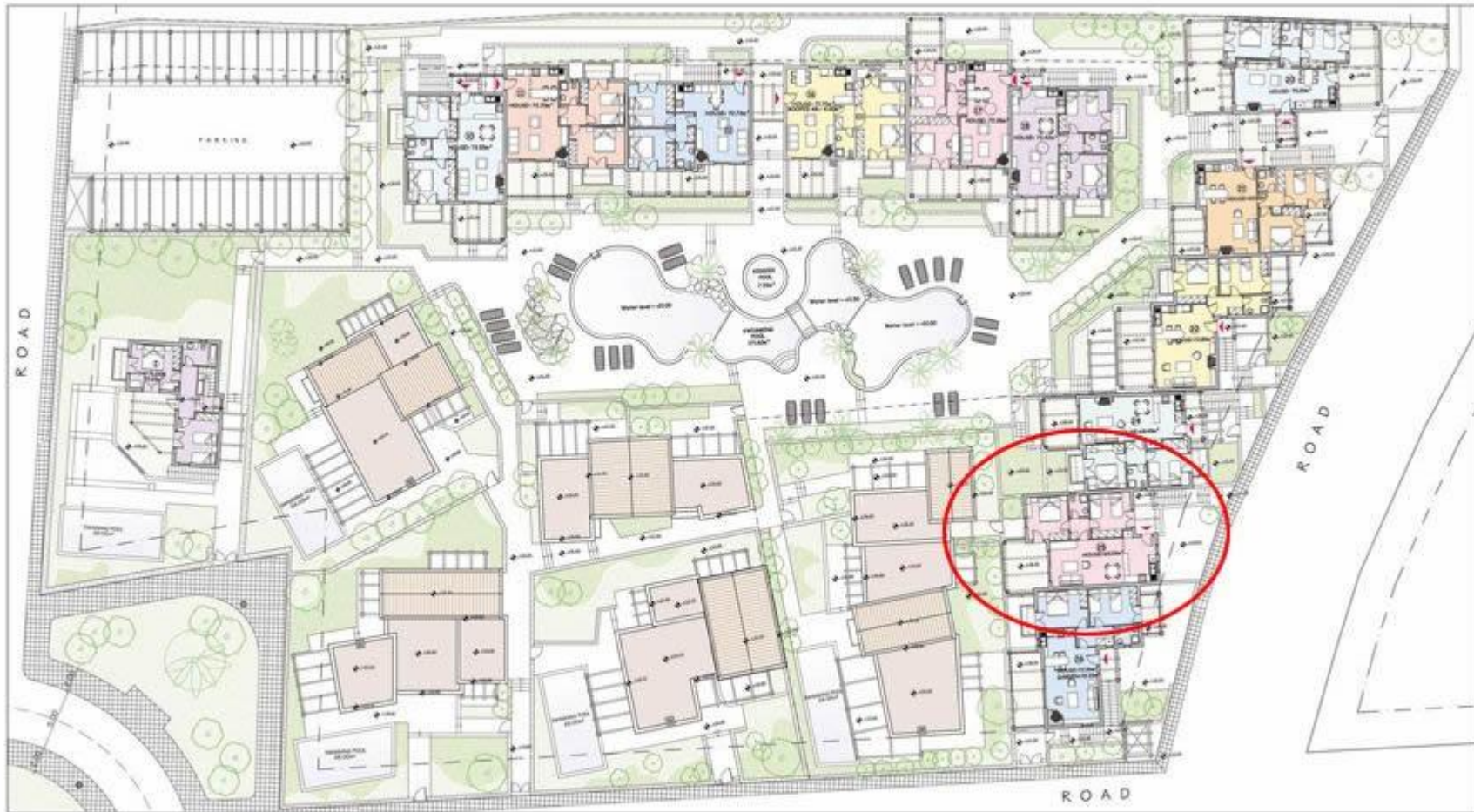
Legal expenses for the transfer of the property ownership  
Property management fees

Approximately 1- 1,2€/sqm/month

#### Optional

Car Parking

4.100€ per place



PANORAMA SEAFRONT HOMES II  
PANORMO CRETE

FIRST FLOOR PLAN



PANORAMA SEAFRONT HOMES II  
 PANORMO CRETE

FIRST FLOOR PLANS - HOUSES 25-26